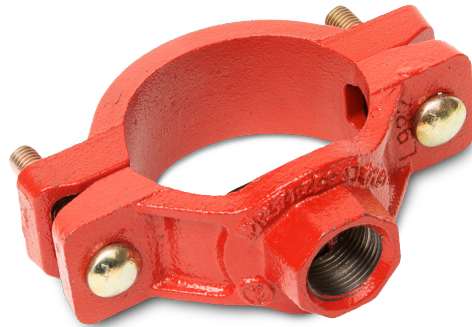
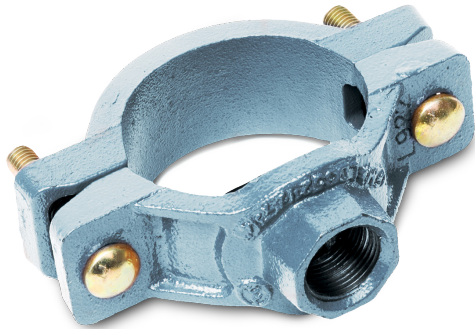
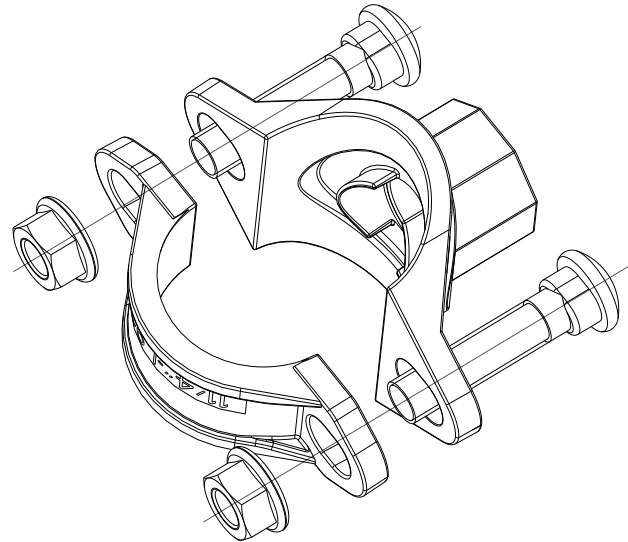
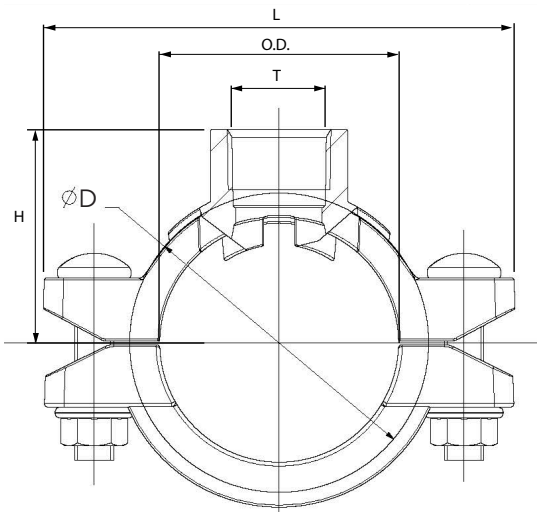


**Size range: 1-1/2" - 2-1/2-1"**  
**THREADED BSPT OUTLET**



Sprinkler tees are designed for direct connections of sprinkler heads.  
Thanks to the pipe-shaped casting collar and outlet shape, this design is easy to install.



### Material specifications

**Housing:** ductile iron conform to ASTM A536 GR65-45-12.

**Coating:**

- Hot dip galvanised.
- Red paint coating RAL 3000, EPD epoxy coating (any other colour on request).

**Rubber gaskets:** EPDM gaskets dispose of the international certifications and have undergone the aging test at 110°C/230°F during a period of 45 days/1080 hours and the frozen test at -40°C/-40°F during a period of 4 days/96 hours.

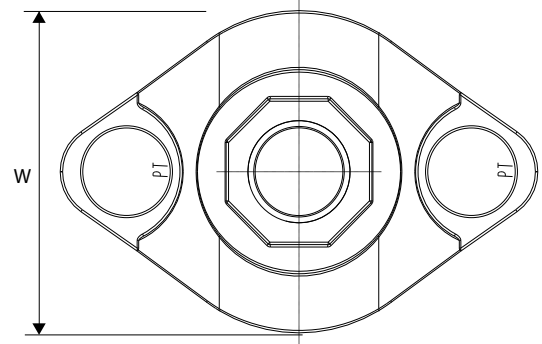
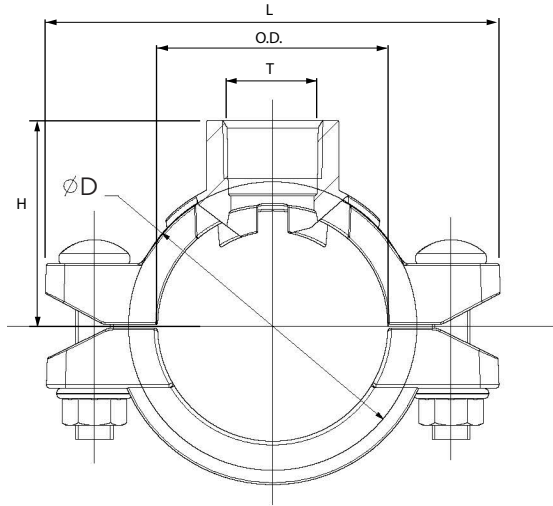
**Bolts and nuts:** see technical datasheet bolts and nuts.

### Working pressure

300 psi / 2068 kPa

### Approvals

- FM approved - FM 1920
- UL listed - UL 213
- CNBOP approved



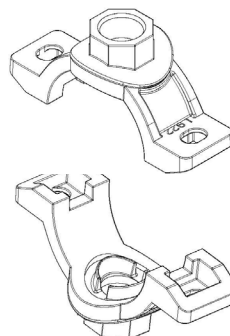
Reference		Nominal size Run - reducing size		Pipe Ø O.D. - T	Full casting sprinkler tee dimensions				Hole cut*	Bolt size	Socket wrench	Bolt torque	Weight	Marking
Red	Galva	NPS inch	DN mm	mm-inch	L mm	H mm	W mm	Ø D mm	mm	d1xL mm	mm	Nm	kg	
GSTFCR	GSTFCG	1-½	25-15	33,7 - ½	93	26,5	47	47	24+1	M10x40	15	44-54	0,28	L922 <sup>1)</sup>
GSTFCR	GSTFCG	1¼-½	32-15	42,4 - ½	98	42,5	65	52	30+1	M10x40	15	44-54	0,42	L922
GSTFCR	GSTFCG	1¼-¾	32-20	42,4 - ¾	98	42,5	65	52	30+1	M10x40	15	44-54	0,46	L922
GSTFCR	GSTFCG	1¼-1	32-25	42,4 - 1	98	51,5	65	52	30+1	M10x40	15	44-54	0,50	L922
GSTFCR	GSTFCG	1½-½	40-15	48,3 - ½	105,6	46,5	65	57,5	30+1	M10x40	15	44-54	0,44	L922
GSTFCR	GSTFCG	1½-¾	40-20	48,3 - ¾	105,6	46,5	65	57,5	30+1	M10x40	15	44-54	0,44	L922
GSTFCR	GSTFCG	1½-1	40-25	48,3 - 1	105,6	54,5	65	57,5	30+1	M10x40	15	44-54	0,52	L922
GSTFCR	GSTFCG	2-½	50-15	60,3 - ½	120	52	56	76	30+1	M10x60	15	44-54	0,64	L922
GSTFCR	GSTFCG	2-¾	50-20	60,3 - ¾	120	52	56	76	30+1	M10x60	15	44-54	0,68	L922
GSTFCR	GSTFCG	2-1	50-25	60,3 - 1	120	52	64	85	38+1	M10x60	15	44-54	0,72	L922
GSTFCR	GSTFCG	2½-½	65-15	73,0 - ½	143	62	65	86	30+1	M10x40	15	44-54	0,71	L922
GSTFCR	GSTFCG	2½-¾	65-20	73,0 - ¾	143	62	65	86	30+1	M10x40	15	44-54	0,73	L922
GSTFCR	GSTFCG	2½-1	65-25	73,0 - 1	143	70	65	86	30+1	M10x40	15	44-54	0,88	L922
GSTFCR	GSTFCG	2½-½	65-15	76,1 - ½	139	59	56	93	30+1	M10x60	15	44-54	0,76	L922
GSTFCR	GSTFCG	2½-¾	65-20	76,1 - ¾	139	59	56	93	30+1	M10x60	15	44-54	0,79	L922
GSTFCR	GSTFCG	2½-1	65-25	76,1 - 1	139	60	64	99	38+1	M10x60	15	44-54	0,88	L922

<sup>1)</sup> No FM- and UL-approval

### LABEL EXAMPLE

Full casting sprinkler tee	
GSTFC	
1½/4-½	1½/2-1
1¼/4-¾	2-½/2
1¼/4-1	2-¾/4
1½/2-½	2½/2-½/2
1½/2-¾	2½/2-¾/4
Hole cut dimension 30(+1mm)	

- \* Please note that the **correct hole cut dimension** is mentioned:
- on the label which is attached to the product itself
  - on the document called 'Hole cut dimensions', which is added to each delivery from our warehouse Piping Logistics, Belgium. This document is attached to the outside of the first box in a plastic pouch with reference 'Documents enclosed'



### Mechanical cross\*\* conversion

	Main pipe diameter		Maximum outlet mechanical cross	
Inch	DN mm	O.D. mm	DN mm	Thread size T
2	50	60,3	25	1"

\*\*Mechanical cross not FM and UL certified.

## GENERAL INFO

- Installers should be trained or experienced to install and understand the product.
- Read and understand all technical datasheets and installation instructions before attempting to install, remove or adjust any Profit piping products.
- Depressurize and drain the sprinkler installation system before attempting to install, remove or adjust any Profit Piping products.
- Never work on piping-systems that are pressurized and /or filled with water.
- Use the necessary Personal Protection Equipment (PPE) to avoid personal injury (helmet, safety shoes and goggles, Profit gloves).




- Profit reserves the right to change specifications, designs and/or standard equipment without notice and without incurring in any obligations.
- Profit red coated products are intended for piping with indoor application (EN 12944-2 corrosivity category C1 & C2). For outdoor installations near the sea (corrosivity category C3) we advise the use of our hot dip galvanized couplings and fittings. For application in corrosivity category C4 (higher salinity climate) or higher, please contact info@pipinglogistics.eu.
- Pressure ratings listed are CWP (cold working pressure) or MWP (maximum working pressure) at a maximum service temperature of 50°C. This rating may occasionally differ from maximum working pressure listed and/or approved by UL and/or FM, as testing conditions and test pipes can differ. For more information, please contact info@pipinglogistics.eu.
- Maximum working pressure listed is the total of internal and external pressures based on standard weight (ANSI) steel pipe and standard roll or cut groove in accordance with Profit specifications. For more information, please contact info@pipinglogistics.eu.
- For one time field test only, the maximum joint working pressure may be increased by 150% the figure shown.

**Failure to follow these instructions could result in death or serious injury and property damage.**

**We advise to always store our products in closed and dry environments, the products do not need any specific maintenance once installed on an aboveground sprinkler installation.**

## REVISION TABLE

Date		Notes
01/03/2024	A	Page 2 - inch added in the table.